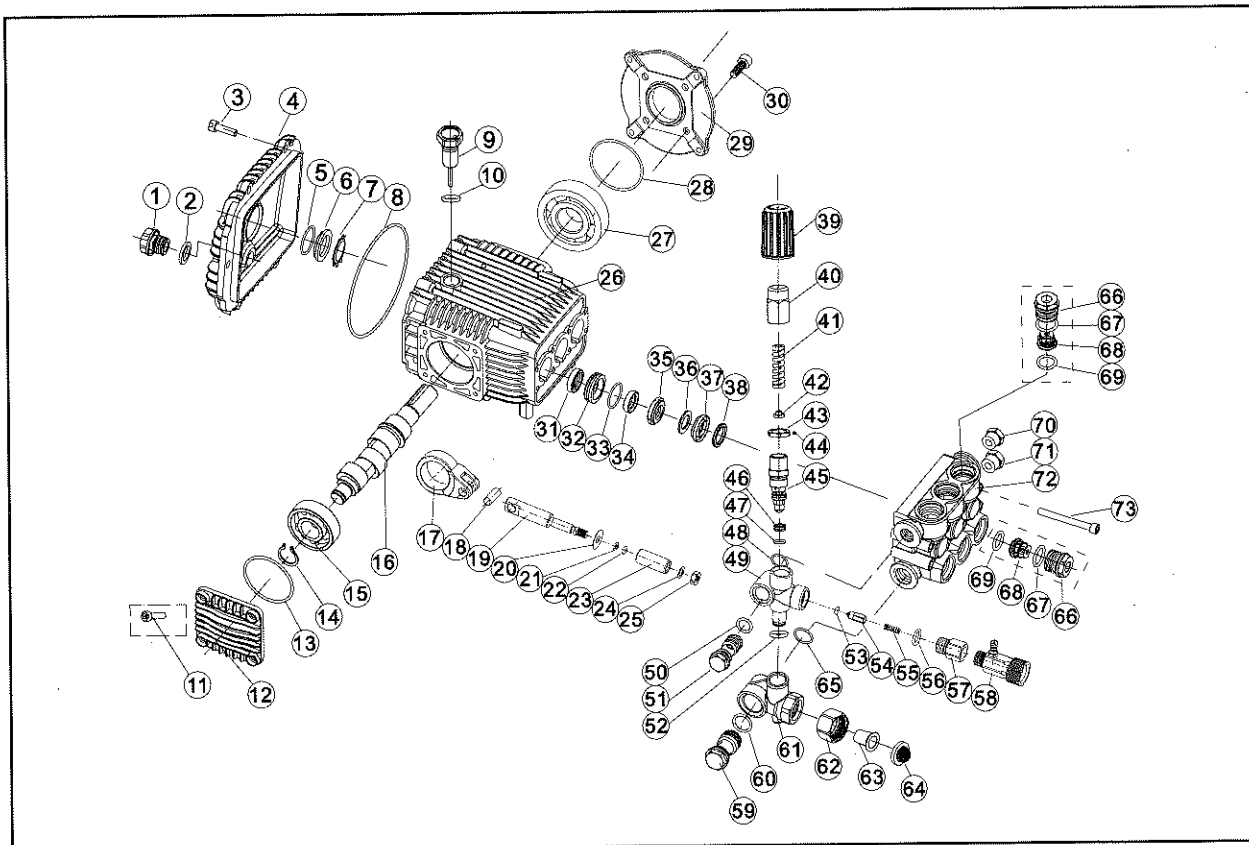


PUMP EXPLODED VIEW AND PARTS LIST



PARTS LIST

1	Drain plug	26	Crankcase	51	Outlet banjo bolt
2	Gasket	27	Ball bearing	52	O-ring
3	Screw	28	O-ring	53	O-ring
4	Crankcase cover	29	Gearbox mounting cover	54	Checking valve
5	O-ring	30	Bolt	55	Spring
6	Side glass	31	Oil seal	56	O-ring
7	Fix clip	32	Retainer ring	57	Outlet connector
8	O-ring	33	O-ring	58	QD with detergent injection
9	Vented oil plug	34	Low pressure seal	59	Inlet banjo bolt
10	O-ring	35	Seal compaction ring	60	O-ring
11	Bolt	36	Seal Compaction flake	61	By-pass housing
12	Crankshaft cover	37	High-pressure seal	62	Swivel nut
13	O-ring	38	Supporting ring	63	Inlet connector
14	Snap ring	39	Plastic cap	64	Inlet water filter
15	Ball bearing	40	Knob	65	O-ring
16	Crankshaft	41	Spring	66	Valve Plug
17	Connecting rod	42	Spring seat	67	O-ring
18	Fix pin	43	Jam nut	68	Checking valve assy
19	Plunger guide	44	Fix screw	69	O-ring
20	Checking ring	45	Unloader Valve	70	Outlet plug
21	Backup ring	46	Valve Seat	71	Inlet plug
22	O-ring	47	O-ring	72	Manifold head
23	Ceramic pipe	48	O-ring	73	Bolt
24	Plain washer	49	Valve housing		
25	Fix nut	50	O-ring		