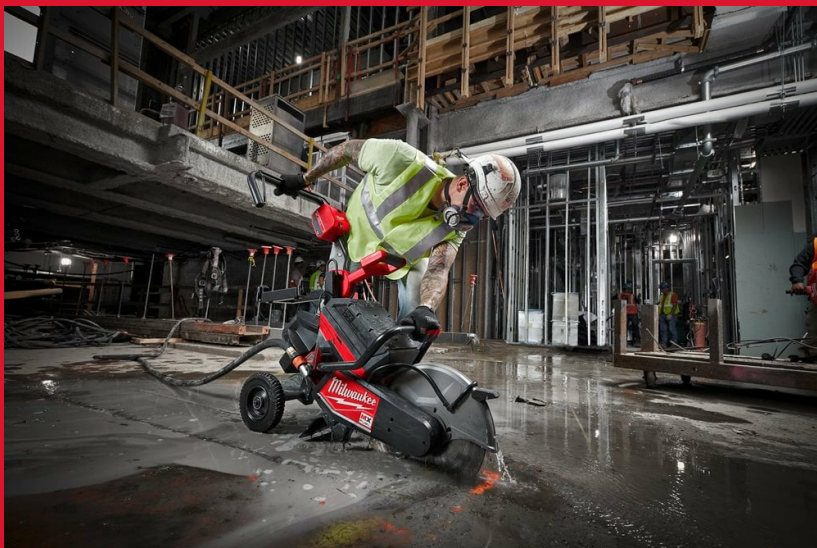


MXF COS350-602

MX FUEL™ 350 MM CUT-OFF SAW

- The world's first 350 mm battery powered cut-off saw to deliver the power to cut reinforced concrete with a full 350 mm cut capacity
- Faster cuts, start to finish: 3 second push button start up eliminates the need to mix petrol and oil, and avoids petrol engine maintenance
- No petrol headaches: Can be used indoors due to zero fume emissions
- Petrol-equivalent performance with a maximum no-load speed of 5370 rpm and a full 125 mm depth of cut
- Quieter than other petrol equivalent saws, with a low engine vibration and well-balanced weight
- Keyless adjustable blade guard & on-board water line for wet cutting which is compatible with the M18™ SWITCH TANK™ interchangeable sprayer and water supply system
- Separately available cut-off saw cart MXF COSC to maintain straight cuts
- Building on the strengths of the FUEL™ technology, MX FUEL™ system reaches new levels of cordless performance. Focused on petrol, corded and pneumatic performance, these tools deliver without the hazards associated with emissions, noise, vibration, tripping hazards and the frustrations of complex maintenance
- ONE-KEY™ tool tracking & security offers a free of charge cloud-based tracking network and inventory management platform for your tools. ONE-KEY™ also features a remote locking functionality



REDLITHIUM™

Article Number	4933464881
Battery pack capacity (Ah)	6.0
Battery type	Li-ion
Blade diameter (mm)	350
Bore size (mm)	20/ 25.4
Kit included	2 x MXF XC406 Battery packs, MXF C Charger, No kitbox or bag supplied
Max. cutting depth (mm)	125
No load speed (rpm)	5370
No. of batteries supplied	2

