

SPARE PARTS LIST

f o r

Far infrared heater

Type

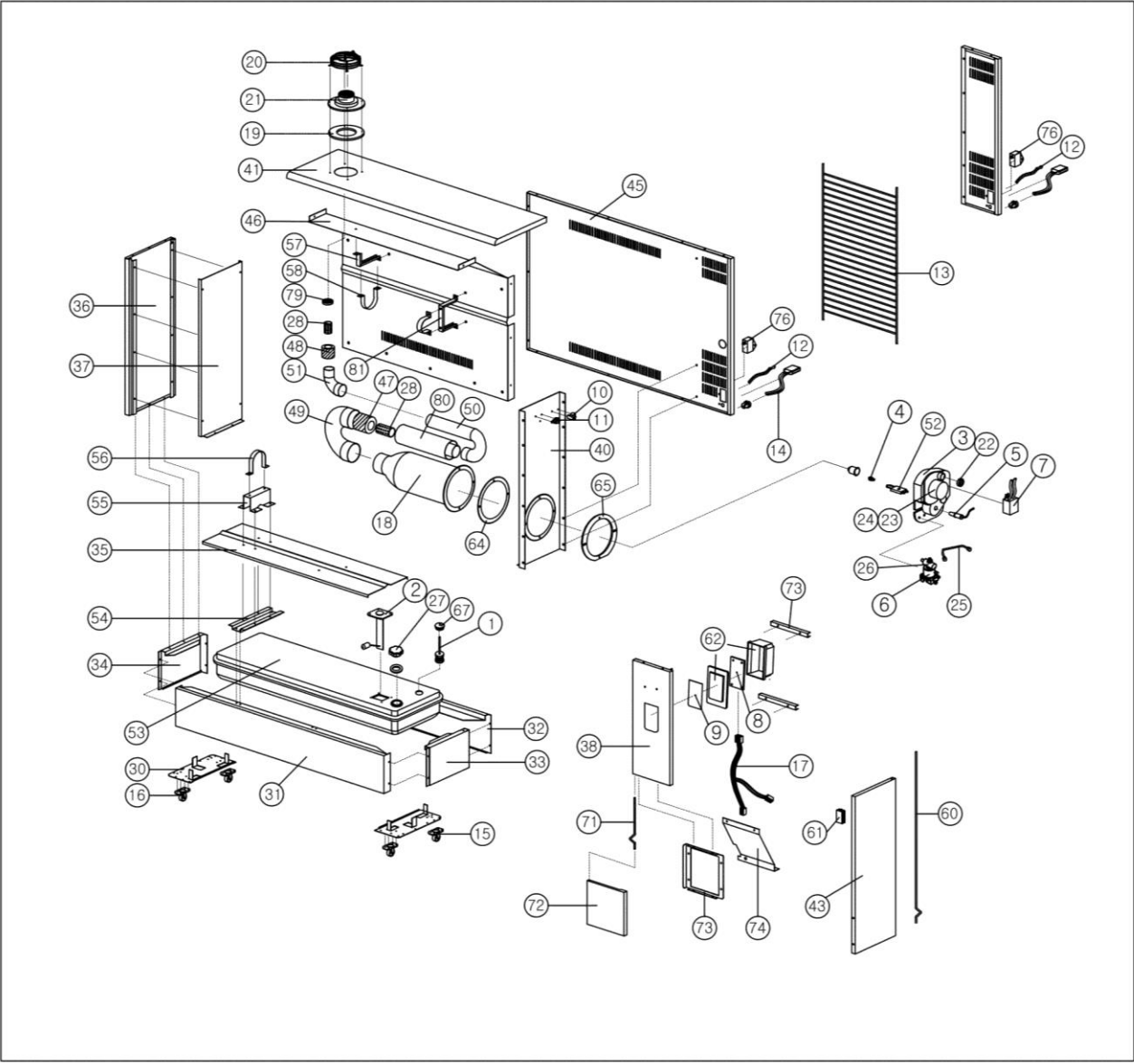
- ◆ FIR2000 for 230V
- ◆ FIR1300 for 230V

March 2022

Shizuoka Seiki Co., Ltd.

* PRICES AND SPECIFICATIONS ARE SUBJECT TO CHANGE WITHOUT NOTICE*

Drawing for FIR 2000



This exploded view diagram illustrates the assembly of a microwave oven. The components are numbered as follows:

- 1-10:** Base and internal structural components, including a base plate (1), support rails (2, 3), and internal bracing (4, 5, 6, 7, 8, 9, 10).
- 11-15:** Lower door and front panel components, including a door frame (11), door panel (12), and front panel (13).
- 16-20:** Upper door and front panel components, including a door frame (16), door panel (17), and front panel (18).
- 21-25:** Internal components, including a turntable (21), turntable support (22), and various mounting brackets (23, 24, 25).
- 26-30:** Upper door and front panel components, including a door frame (26), door panel (27), and front panel (28).
- 31-35:** Internal components, including a turntable (31), turntable support (32), and various mounting brackets (33, 34, 35).
- 36-40:** Upper door and front panel components, including a door frame (36), door panel (37), and front panel (38).
- 41-45:** Internal components, including a turntable (41), turntable support (42), and various mounting brackets (43, 44, 45).
- 46-50:** Upper door and front panel components, including a door frame (46), door panel (47), and front panel (48).
- 51-55:** Internal components, including a turntable (51), turntable support (52), and various mounting brackets (53, 54, 55).
- 56-60:** Upper door and front panel components, including a door frame (56), door panel (57), and front panel (58).
- 61-65:** Internal components, including a turntable (61), turntable support (62), and various mounting brackets (63, 64, 65).
- 66-70:** Upper door and front panel components, including a door frame (66), door panel (67), and front panel (68).
- 71-74:** Internal components, including a turntable (71), turntable support (72), and various mounting brackets (73, 74).

Shizuoka Seiki Co.,Ltd.

Revised: June 2022

No.	Parts code	Part name	Q'ty/ unit	2000 -E	1300 -E	Remarks
1	TKH080-001	Filter	1	●	●	
---	TKH080-SS1	Filter only	1	●	●	Not shown
2	TKH080-002	Fuel Gauge	1	●	●	
3	TKH180-003	Burner	1	●		
	TKH121-003				●	
4	TKH180-004	Nozzle	1	●		0.4G
	TKH121-004(0.4G)				●	0.4G
5	TKH080-005	Photocell	1	●	●	
6	TKH180-006	Pump	1	●		
	TKH121-006				●	
7	TKH080-007	Ignitor	1	●	●	
8	TKH100-008	P.C.B	1	N/A		2000-E; till 2019, U-lot, No.8,9 & 62 being assembled, Not supplied individually
	TKH080-008(SS)			●	●	2000-E; from 2020, T-lot, No.8,9 & 62 being assembled, Not supplied individually
9	TKH100-009	Name Plate	1	●	●	No.8,9 & 62 being assembled, Not supplied individually, See No.8
10	TKH080-010	Tip Over Switch	1	●	●	
11	TKH080-011	Thermostat	1	●	●	
12	TKH080-012	Thermistor	1	●		2000-E; till 2019, U-lot
	TKH080-012(SS)			●	●	2000-E; from 2020, T-lot
13	TKH181-013	Front Safety Wire	1	●		
	TKH121-013				●	
14	TKH080-014	Power code	1	●		2000-E; till 2019, U-lot
	TKH080-014-19			●	●	2000-E; from 2020, T-lot
15	TKH080-015	Caster(R/B)	2	●	●	
16	TKH080-016	Caster(R)	2	●	●	
17	TKH180-017	Read Wire	1	●		2000-E; till 2019, U-lot
	TKH180-017-19			●		2000-E; from 2020, T-lot
	TKH080-017-19				●	
18	TKH160-018	Combustion Chanber	1	●		
	TKH121-018				●	
19	TKH080-019	Airoutlet Gasket	1	●	●	
20	TKH080-020	Exhaust Safety Wire	1	●	●	
21	TKH080-021	Exhaust Cap	1	●	●	
22	TKH080-022	Airoutlet	1	N/A		2000-E; till 2019, U-lot
	TKH181-022			●		2000-E; from 2020, T-lot
	TKH121-022				●	
23	TKH080-023	Fan	1		●	
24	TKH180-024	Motor	1	●		
	TKH080-024				●	
25	TKH080-025	Oil Pipe	4	●	●	
26	TKH080-026	Solenoid Valve	1	●	●	
27	TKH080-027	Fuel Cap	1	●	●	
28	TKH080-028	Silencer Pipe(S)	2	●	●	2000; 1pc
29	TKH080-029	Silencer Pipe(L)	1	●	●	
30	TKH080-030	Caster B/K	2	●	●	
31	TKH160-031	Front Base	1	●		
	TKH120-031				●	
32	TKH160-032	Rear Base	1	●		
	TKH120-032				●	
33	TKH080-033	Right Base	1	●	●	
34	TKH080-034	Left Base	1	●	●	
35	TKH160-035	Bottom Reflector	1	●		
	TKH120-035				●	
36	TKH180-036	Left Cover	1	●		
	TKH080-036				●	
37	TKH180-037	Left Reflector	1	●		
	TKH080-037				●	available in request at production

Shizuoka Seiki Co., Ltd.

38	TKH180-038	Cont. Front Cover	1	●		No.31 - 42 and No.44 - 46: rivet assembly
	TKH120-038				●	
39	TKH180-039	Burner Cover	1	●		
	TKH080-039				●	
40	TKH180-040	Right Reflector	1	●		
	TKH080-040				●	
41	TKH180-041	Top Cover	1	●		
	TKH120-041				●	
42	TKH180-042	Top Reflector	1	●		
	TKH120-042				●	
43	TKH180-043	Door	1	●		
	TKH080-043				●	
44	TKH180-044	Cont. Rear Cover	1	●		2000-E; till 2019, U-lot
	TKH180-044-19			●		2000-E; from 2020, T-lot
	TKH120-044-19				●	available in request at production
45	TKH180-045	Rear Cover	1	●		
	TKH120-045				●	No.31 - 42 and No.44 - 46: rivet assembly
46	TKH180-046	Rear Reflector	1	●		
	TKH120-046				●	
47	TKH080-047	Silencer Wool(S)	2	●	●	
48	TKH120-048	Silencer Wool(L)	1	●	●	
49		Combustion Tube-L	N/A			
50	TKH160-050	Tube J	3	●		silver for 2000wood
	TKH120-050				●	
51	TKH120-051	Tube- L	1	●	●	silver for 2000wood
52	TKH080-052	Spark plug	1	●	●	
53	TKH160-053	Tank	1	●		
	TKH120-053				●	
54	TKH080-054	Tank Support B/K	2	●	●	
55	TKH120-055	Combustion Support	1	●	●	
56	TKH120-056	Combustion Bend	1	●	●	
57	TKH120-057	Tube Support-B	2	●	●	
58	TKH120-058	Tube Bend	2	●	●	
60	TKH080-060	Door Pin	1		●	
	TKH180-060			●		
61	TKH080-061	Magnet	2	●	●	
62	TKH080-062	Control Box	1	●	●	No.8,9 & 62 being assembled, Not supplied individually, See No.8
63	TKH160-063	Top Insulator	1	●		
	TKH120-063				●	
64	TKH080-064	Combustion Gasket	1	●	●	
65	TKH080-065	Burner Gasket	1	●	●	
66	TKH180-066	Right Insulator	1	●		
	TKH080-066				●	
67	TKH080-067	Filter Packing	1	●	●	
68	TKH080-068	Remote Control	1	●	●	Not shown
71	TKH080-071	Front Door Pin	1	●	●	
72	TKH180-072	Front Door	1	●		
	TKH100-072				●	
73	TKH180-073	Front Door Support	1	●		
	TKH100-073				●	
74	TKH180-074	Burner Divide Plate	1	●		
	TKH100-074				●	
75	TKH080-075	Noise Filter cover	1	●		till 2019, U-lot
76	TKH080-076	Noise Filter	1	●	●	till 2019, U-lot
	TKH080-076-19		1	●	●	from 2020, T-lot Not require #75, 77 and 78
77	TKH080-077	Noise Filter Bracket	1	●	●	
78	TKH080-078	Fuse Holder	1	●	●	till 2019, U-lot