

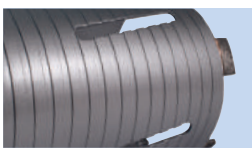


DCX90 11 PIECE CORE DRILL KIT - SLOTTED

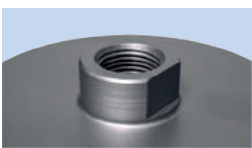
The DCX90 range of dry core drills are ideal for the plumber, builder and general tradesman providing a compact and versatile kit for drilling holes in masonry from 38mm – 127mm.

All items included within the 11 piece case can be purchased individually for restocking of the kit.

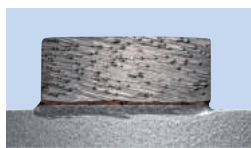
Mexco dry core drills should be used in conjunction with a minimum 850W+ drill motor fitted with a slipping clutch.



High quality slotted & fluted steel barrel for fast waste removal



1/2" BSP back end fitment



High diamond concentration

PRODUCT OVERVIEW:

Grade: X90

Segment Height: 10mm

Segment Attachment: Brazed

Dry/Wet: Dry

Segment Type: Flat Curve

Barrel Type: Slotted & Fluted



LOW WEAR RATE

The X90 range of products allow a broad range of cutting applications and will provide fast cutting characteristics combined with low wear rates and an excellent lifetime.



PRODUCT DATA SHEET

KIT CONTENTS:

Code	Description	
A10DC38	38MM DRY CORE DRILL - SLOTTED	
A10DC52	52MM DRY CORE DRILL - SLOTTED	
A10DC65	65MM DRY CORE DRILL - SLOTTED	
A10DC117	117MM DRY CORE DRILL - SLOTTED	
A10DC127	127MM DRY CORE DRILL - SLOTTED	
A10SDSADA80	SDS 80MM ADAPTOR	
A10SDSADA250	SDS 250MM ADAPTOR	
A10HEXADA80	HEX 80MM ADAPTOR	
A10HEXADA250	HEX 250MM ADAPTOR	
A10DRKEY	DRIFT KEY	
A10ATAPER175	10 X 175MM PILOT DRILL	
A10DCDCASE5	11PC CORE DRILL CASE	

SUITABLE FOR USE ON:

CORE DRILL MACHINES IN ACCORDANCE WITH MANUFACTURERS HANDBOOK



APPLICATION:

- Medium Soft Facing Brick
- Concrete Blocks
- Hard Sandstone
- Coarse Sandstone
- Soft Slate
- Breeze Block
- Lignacite Blocks



- **RECOMMENDED** to cut these materials
- **Will cut these materials** with the possibility of reduced lifetime / glazing

PRODUCT DATA SHEET