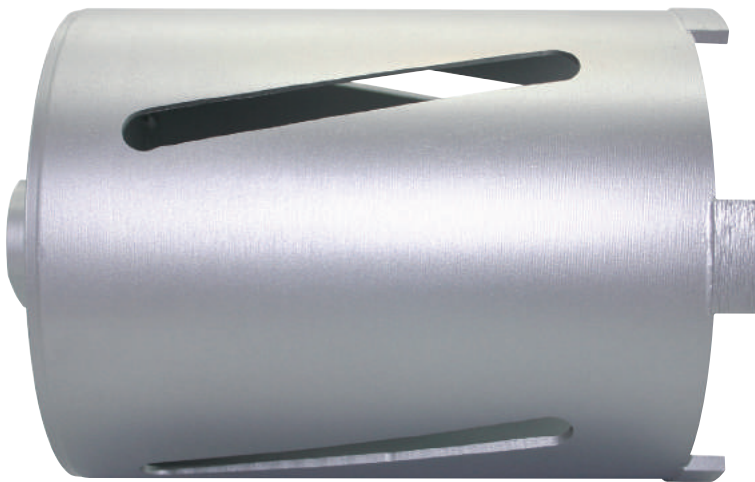


**DCX90 DRY CORE DRILLS - SLOTTED BARREL**

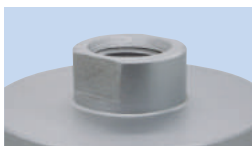
The DCX90 range of dry core drills offer fast drilling speeds and all round performance in masonry building materials due to the high quality diamond segments and welded barrels. Mexco dry core drills should be used in conjunction with a minimum 850W+ drill motor fitted with a slipping clutch.

**KEY FEATURES**

- Slotted Barrels For Fast Waste Removal
- 1/2" BSP Female Backend
- High Diamond Concentration



High quality slotted steel barrel



1/2" BSP female fitment



High diamond concentration

**PRODUCT OVERVIEW:**

**Grade:** X90

**Segment Height:** 10mm

**Segment Attachment:** Brazed

**Dry/Wet:** Dry

**Segment Type:** Flat Curve

**Barrell Type:** Slotted



**LOW WEAR RATE**

The X90 range of products allow a broad range of cutting applications and will provide fast cutting characteristics combined with low wear rates and an excellent lifetime.



**PRODUCT DATA SHEET**

**DIAMETERS AVAILABLE:**

Code	Diameter (mm)	Length (mm)
A10DC22	22	400
A10DC28	28	400
A10DC32	32	400
A10DC38	38	165
A10DC48	48	165
A10DC52	52	165
A10DC65	65	165
A10DC78	78	165
A10DC82	82	165
A10DC91	91	165
A10DC102	102	165
A10DC107	107	165
A10DC117	117	165
A10DC127	127	165
A10DC132	132	165
A10DC142	142	165
A10DC152	152	165
A10DC162	162	165
A10DC182	182	165

**SUITABLE FOR USE ON:**

CORE DRILL MACHINES IN ACCORDANCE WITH MANUFACTURERS HANDBOOK



**APPLICATION:**

- Medium Soft Facing Brick
- Concrete Blocks
- Hard Sandstone
- Coarse Sandstone
- Soft Slate
- Breeze Block
- Lignacite Blocks



Brick



Soft Stone



Concrete Block

- **RECOMMENDED** to cut these materials
- **Will cut these materials** with the possibility of reduced lifetime / glazing